

T³

Switch

COLLECTION

T^T**TOTALLY**
ENTERPRISES, LLC

TOTALLY

TOTALLY
ENTERPRISES, LLC

totallycarpet.com

888.882.1500

T³

Transition Technology, or T³[™] is Totally Carpet's unique, patented process integrating two or more carpet styles into one; producing a beautifully textured, sophisticated hybrid carpet; or, a feature piece based on the integrity of its distinctive aesthetic. The end result is an advanced flooring product that allows carpet themes to flow into one another, regardless of weight or color; easily allowing variations and coordinating themes throughout a project.

**1030-D1602 Nano
Tile + Quarter Turned**



Joule

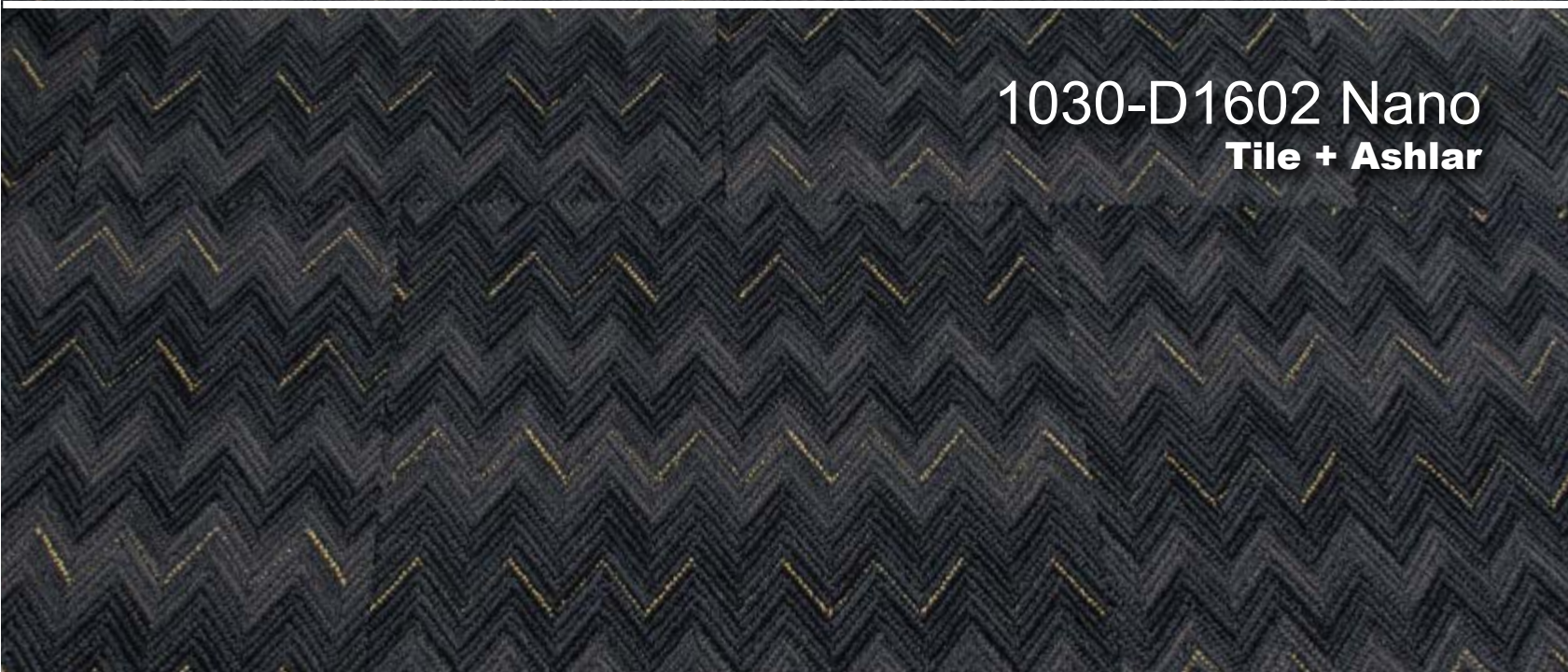
Style Number	1030
Pattern Repeat	28.8" W x 8.75" L
Tufted Yarn Weight	38 oz
Gauge	1/10
Construction	Tip Sheared Enhanced Loop
Face Yarn	100 % Solution Dyed Nylon
Yarn Spec	Twisted & Heatset For High Performance
Tufts/sq in.	160 (Gauge x Stitch Rate x Tufts/Stitch)
Pile Height	0.156
Primary Backing	4 oz Woven Polypropylene
Secondary Backing	High Performance Backing System with 18x5 Lino ActionBac
Tile Backing	Vinyl composite with recycled content
Width Broadloom	12'
Tile Size	24" x 24"



**1030-D1602 Nano
Tile + Monolithic**
[pictured with Ohm]



**1030-D1602 Nano
Tile + Ashlar**



Treatments	Commercial carpet soil & static control
Post Installation Protection	Plastic protection is prohibited. It causes discoloration and accelerated soiling. Craft paper, corrugated box material or masonite are recommended.
Broadloom Adhesive.....	Totally Premium Broadloom Adhesive
Tile Adhesive.....	Totally Premium Tile Adhesive
Flammability.....	Passes Class 1 (ASTM E-648)
Electrostatic Propensity	Passes AATCC - 134 @ 3.5 KV or less
Dye Lot Size	Unlimited
Custom Colors & Weight	Please Inquire
Origin.....	Made in USA
LEED	Contributes to Leed Credits
CRI	Green Label Plus
Warranty	Tile: limited lifetime warranty Broadloom: 10-year limited warranty

1031-D1602 Nano
Tile + Monolithic
 [pictured with Ohm]

1031-D1602 Nano
Tile + Ashlar

1031-D1602 Nano
Tile + Quarter Turned

Arc



Style Number	1031
Pattern Repeat	14.4" W x 2.25" L
Tufted Yarn Weight	32 oz
Gauge	1/10
Construction	Tip Sheared Enhanced Loop
Face Yarn	100% Solution Dyed Nylon
Yarn Spec	Twisted & Heatset For High Performance
Tufts/sq in.	160 (Gauge x Stitch Rate x Tufts/Stitch)
Pile Height	0.125
Primary Backing	4 oz Woven Polypropylene
Secondary Backing	High Performance Backing System with 18x5 Lino ActionBac
Tile Backing	Vinyl composite with recycled content
Width Broadloom	12'
Tile Size	24" x 24"

Treatments	Commercial carpet soil & static control
Post Installation Protection	Plastic protection is prohibited. It causes discoloration and accelerated soiling. Craft paper, corrugated box material or masonite are recommended.
Broadloom Adhesive.....	Totally Premium Broadloom Adhesive
Tile Adhesive.....	Totally Premium Tile Adhesive
Flammability.....	Passes Class 1 (ASTM E-648)
Electrostatic Propensity	Passes AATCC - 134 @ 3.5 KV or less
Dye Lot Size	Unlimited
Custom Colors & Weight	Please Inquire
Origin.....	Made in USA
LEED	Contributes to Leed Credits
CRI	Green Label Plus
Warranty	Tile: limited lifetime warranty Broadloom: 10-year limited warranty

1032-D1602 Nano
Tile + Monolithic

1032-D1602 Nano
Tile + Ashlar

1032-D1602 Nano
Tile + Quarter Turned

Ohm



Style Number	1032
Pattern Repeat	14.4" W x .25" L
Tufted Yarn Weight	32 oz
Gauge	1/10
Construction	Tip Sheared Enhanced Loop
Face Yarn	100% Solution Dyed Nylon
Yarn Spec	Twisted & Heatset For High Performance
Tufts/sq in.	160 (Gauge x Stitch Rate x Tufts/Stitch)
Pile Height	0.125
Primary Backing	4 oz Woven Polypropylene
Secondary Backing	High Performance Backing System with 18x5 Lino ActionBac
Tile Backing	Vinyl composite with recycled content
Width Broadloom	12'
Tile Size	24" x 24"

Treatments	Commercial carpet soil & static control
Post Installation Protection	Plastic protection is prohibited. It causes discoloration and accelerated soiling. Craft paper, corrugated box material or masonite are recommended.
Broadloom Adhesive.....	Totally Premium Broadloom Adhesive
Tile Adhesive.....	Totally Premium Tile Adhesive
Flammability.....	Passes Class 1 (ASTM E-648)
Electrostatic Propensity	Passes AATCC - 134 @ 3.5 KV or less
Dye Lot Size	Unlimited
Custom Colors & Weight	Please Inquire
Origin.....	Made in USA
LEED	Contributes to Leed Credits
CRI	Green Label Plus
Warranty	Tile: limited lifetime warranty Broadloom: 10-year limited warranty



TTOTALLY
ENTERPRISES, LLC

totallycarpet.com

888.882.1500



TTOTALLY

ENTERPRISES, LLC

totallycarpet.com

888.882.1500