



Executive
COLLECTION

T**TOTALLY**
ENTERPRISES, LLC







Executive

| | |
|--------------------------|--|
| Style Number | 1020 |
| Pattern Repeat | None |
| Tufted Yarn Weight | 66 oz. |
| Gauge | 1/10 |
| Construction | Shear |
| Face Yarn | 100% Solution Dyed Nylon |
| Yarn Spec | Cortex™ Twisted & Heatset for High Performance. |
| Tufts per Sq. Inch | 200 (Gauge x Stitch Rate x Tufts/Stitch) |
| Pile Height | 0.281 |
| Primary Backing | 4 oz Woven Polypropylene |
| Secondary Backing | High Performance Backing System with 18x5 Lino ActionBac |
| Tile Backing | Vinyl composite with recycled content |
| Width Broadloom..... | 12' |

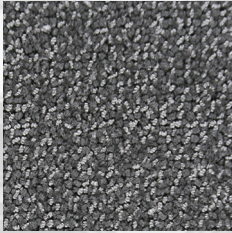




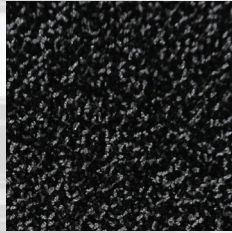
XP 1020-C9795 Boardroom

| | |
|------------------------------------|--|
| Tile Size | 24" x 24" |
| Treatments | Commercial carpet soil & static control |
| Post Installation Protection | Plastic protection is prohibited. It causes discoloration and accelerated soiling. Craft paper, corrugated box material or masonite are recommended. |
| Broadloom Adhesive..... | Totally Premium Broadloom Adhesive |
| Tile Adhesive..... | Totally Premium Tile Adhesive |
| Flammability..... | Passes Class 1 (ASTM E-648) |
| Electrostatic Propensity | Passes AATCC - 134 @ 3.5 KV or less |
| Dye Lot Size | Unlimited |
| Custom Color & Weight | Please Inquire |
| Origin..... | Made in USA |
| LEED | Contributes to Leed Credits |
| CRI | Green Label Plus |
| Warranty | Tile: limited lifetime warranty Broadloom: 10-year limited warranty |

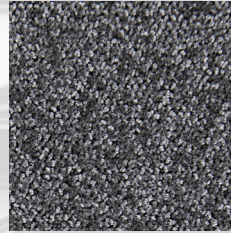




BOARDROOM
-C9795



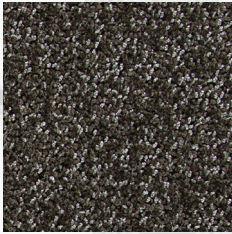
GALLERY
-B1116



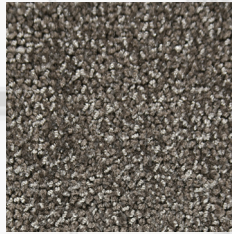
CORRIDOR
-C1195



RECEPTION
AREA
-B0311



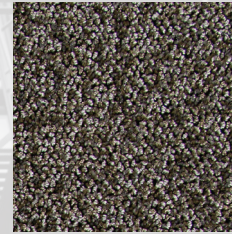
MEZZANINE
-A2011



LOFT
-C2695



OFFICE
-A4003



VESTIBULE
-C1295



TERRACE
-C2295



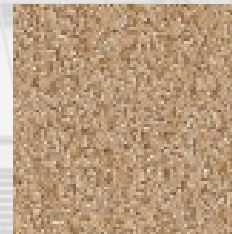
ATRIUM
-B0320



STAIRCASE
-C2333



AUDITORIUM
-C3195



BREEZEWAY
-B0319



indicates Quickship colors



TTOTALLY

ENTERPRISES, LLC

totallycarpet.com

888.882.1500